

NEIGHBORHOOD NEWS

The Neighborhood Learning Center's monthly newsletter

January 2025

tnlcenter.com

Thurs Jan 1: NLC CLOSED for New Year's Day

Mon Jan 20: NLC CLOSED for Martin Luther King, Jr. Day

Mon Jan 27 - Weds Jan 29: LCPS CLOSED, NLC OPEN for School's Out Drop-In Days!

Email Ms JoAnna to sign up your school-ager.

\$50 for currently enrolled students

\$70 for not currently enrolled

INCLEMENT WEATHER POLICIES!

THE NLC DOES NOT FOLLOW LOUDOUN COUNTY PUBLIC SCHOOLS FOR INCLEMENT WEATHER-RELATED CLOSINGS OR DELAYS.

This decision is based on the safety of our students, parents, and staff.

- Most of our staff live west of Purcellville where inclement weather is generally more severe.
- If LCPS have an early dismissal, the NLC bus will immediately pick the children up from school who are scheduled to come to us by bus in the afternoon.
- Parents and staff will receive a text and an email from the NLC no later than 6:00am should a closure or delay be in effect for the NLC on a particular day. If a decision is made to close early due to inclement weather, parents will be notified via text and email as soon as the decision is made.

WINTER WEATHER IS HERE!

At the NLC, we take the children outside as long as it is above freezing. NOW is the time to make sure your little one is dressed for time outdoors so they can reap the benefits of outside play!

- Please LABEL everything you send to school
- Layers are best!
- Hats along with mittens (or gloves for older children) are a MUST
- Send in a new set of spare, winter-appropriate clothing

CLOTHING DONATIONS NEEDED!

We always try to keep some spare clothes on hand for those moments that always happen with kids! If you have any spare winter clothing that your child has outgrown, (especially mittens, hats, winter coats, & boots) please consider donating them to the NLC. Always needed are also spare pants and shirts. ALL SIZES!

NOTE:

If your child is sent home in NLC clothing, please remember to wash it and bring it back so we can return it to our stash.

thank you

Staff Birthdays

Jan 17:

Ms Larkin

Jan 25: Ms Kim

January 2025

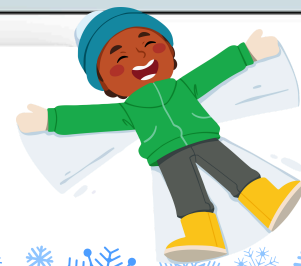
Sunday	Monday	Tuesday	Wednesday	Thursday	Friday	Saturday
^Sundays at St Andrew - All are welcome! 9am: Sunday School for youth (MS/HS) & adults 10am: Worship service, with Sunday School for younger kids during the service 9am-noon: Childcare available for infant to age 3 <i>The worship service is also streamed on YouTube</i>			1 NLC CLOSED for New Year's Day	2	3 Mercier School of Dance'	4
5 Worship^ service 10am <i>MS/HS Youth 6-8pm</i>	6	7 Chapel 9:45am	8 Wee Little Arts~	9 HIBERNATION DAY! <i>Wear your PJs to school!</i>	10 Mercier School of Dance'	11
12 Worship^ service 10am <i>Minis (grades 4&5) after the service, plus committee meetings</i>	13	14 Chapel 9:45am	15 Wee Little Arts~	16	17 Mercier School of Dance'	18
19 Worship^ service 10am <i>Session mtg after the service MS/HS Youth 6-8pm</i>	20 NLC CLOSED in observance of Martin Luther King, Jr. Day	21 Chapel 9:45am	22 Wee Little Arts~	23 <i>National Pie Day</i>	24 Mercier School of Dance'	25
26 Worship^ service 10am <i>Food on the 4th - bring a food donation</i> CONGREGATIONAL MEETING	27	28 Chapel 9:45am	29	30	31 Mercier School of Dance'	

LCPS Closed, NLC open for School's Out Drop-In Days

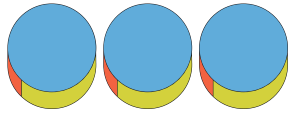
EXTRACURRICULARS:

Mercier School of Dance - Creative Dance & Ballet, Fridays 9:50-10:20am, 2.5-6yrs, \$68/mo Sep-May, enrollment fee of \$25. Register at: www.mercierschoolofdance.com/registration.

~Wee Little Arts
 Session 2: Jan 8 - Mar 5, 2025
 Wednesdays, pre-K 2:30-3:15pm, 3-yr-olds 3:15-4pm, \$160.
 Register at <http://weelittlearts.com>



DID YOU KNOW?



Your NLC is now a VQB5 site and has completed its first round of teacher assessments. Our hard-working teachers are now using the STREAMin3 curriculum, developed by the University of Virginia (UVA).

VQB5 stands for the Virginia Quality Birth to Five System, Virginia's system for measuring and supporting quality in early childhood programs so that children enter kindergarten ready to learn. VQB5-trained observers look at all classrooms using a nationally-regarded observation tool called CLASS, focusing on the interactions between teachers and children.

VQB5
for Families



The STREAMin3 curriculum has been developed at the Center for the Advanced Study of Teaching and Learning (CASTL) at UVA.

This curriculum is grounded in developmental and early education research. It focuses on 6 STREAM and 5 Core Skills to promote children's development and early learning, preparing them for success in kindergarten and beyond.

A FOCUS ON IMPLEMENTATION

The in³ of STREAMin³

- Integrated**
We integrate academic and social-emotional skills in a way that leads to authentic, powerful learning experiences. Our curriculum spans across birth to five, providing a trajectory of learning.
- Intentional**
Our curriculum is designed so that teachers know why they are doing what they are doing in any given moment. This intentionality means that effective support is provided throughout the entire day, not just during formal activities.
- Interactions**
A child's interactions between teachers and peers are what matter most. We focus on the importance of interactions during planned activities, as well as the moment-to-moment interactions that happen across the day.



GET DETAILS HERE!



Christmas at the MLC



The best present
is your presence.

Thank You



The Neighborhood Learning Center ~ Menu for January 2025

		Monday	Tuesday	Wednesday	Thursday	Friday
Jan. 6 - 10	Morning Snack	WG Cereal*^ Milk^	Sausage Gravy*^ Biscuits*^ Water	WG Waffles*^ Blueberries Water	Muffins*^ Banana Water	WG Cereal*^ Milk^
	Lunch	Ravioli*^ Corn Mixed Fruit Milk	Meatballs*^ WG Roll*^ Green Beans Mandarin Oranges Milk	Chicken & Rice*^ Broccoli Pineapple Milk	WG Fish Nuggets*^ Peas Pears Milk	Pasta w/ Meat Sauce*^ Diced carrots Peaches Milk
	Snack	Graham Crackers*^ Pudding^ Water	Veggie Straws* Raisins* (T) Fruit Water	Fig Bars Sliced Apples (T) Applesauce Water	Applesauce Cookies*^ Yogurt^ Water	Goldfish* Cheese Stick^ Water
Jan. 13 - 17	Morning Snack	WG Cereal*^ Milk^	Yogurt^ Granola* Water	Turkey Sausage Patty* Biscuit*^ Water	WG Pancakes*^ Berries Water	WG Cereal*^ Milk^
	Lunch	Taco Salad*^ Corn WG Roll*^ Tropical Fruit Milk	Beef Stew*^ Cornbread*^ Pears Milk	WG Chicken Nuggets*^ Peas Pineapple Milk	Corndogs*^ Green Beans Peaches Milk	Pizza Day! Salad w/ Dressing^ (T) Cucumbers Mandarin Oranges Milk
	Snack	Apple Bars*^ Fruit Cup Water	Pita Crackers* Hummus* (T) Crackers* Water	Crackers*^ Pepperoni* Sliced Cheese^ Water	WG Corn Chips* Salsa* (T) Crackers* Water	Bananas Vanilla Wafers*^ Water
Jan. 20 - 24	Morning Snack	NLC CLOSED In Observance of Martin Luther King, Jr. Day	Muffins*^ Bananas Water	Yogurt^ Granola* Water	WG Pancakes*^ Berries Water	WG Cereal*^ Milk^
	Lunch		Pulled Chicken* WG Roll*^ Green Beans Pears Milk	Mac N Cheese*^ Carrots & Dip (T) Diced Carrots Pineapple Milk	WG Fish Nuggets Peas Applesauce Milk	White Chicken Chili*^ Cornbread*^ Pears Milk
	Snack		Pretzels* Dip^ (T) Crackers* Fruit Cup Water	WG Homemade Trail Mix*^ Fruit Cup Water	WG Corn Chips* Salsa* (T) Crackers* Water	Goldfish* Mandarin Oranges Water
Jan. 27 - 31	Morning Snack	WG Cereal*^ Milk^	Chipped Beef Gravy*^ Biscuits*^ Water	Sausage Patty* Croissants*^ Water	WG Pancakes*^ Berries Water	WG Cereal*^ Milk
	Lunch	Pasta w/ Meat Sauce*^ Salad w/ Dressing^ (T) Cucumbers Peaches Milk LCPS CLOSED	Taco Salad*^ WG Roll*^ Corn Pears Milk LCPS CLOSED	Beans & Franks*^ WG Roll*^ Mixed Fruit Milk LCPS CLOSED	Salisbury Steak* Green Beans Mandarin Oranges Milk	Chicken & Rice*^ Broccoli Pineapple Milk
	Snack	Animal Crackers*^ Applesauce Water	Cheese Itz*^ Go-gurt^ Water	Applesauce Cookies*^ Bananas Water	Veggie Straws* Raisins* (T)Fruit Water	Cheese Sticks^ Crackers* Water

Whole milk is served to children under 2 and 2% milk is served to all others. Menus are subject to change.

*May contain eggs ^May contain milk (T)=Toddlers WG = Whole Grain