

# NEIGHBORHOOD NEWS

The Neighborhood Learning Center's monthly newsletter

March 2025

[tnlcenter.com](http://tnlcenter.com)



Yes, it's that time again! We have been nominated for best Childcare Center and best Preschool, and we need YOUR help to make it through the first round of voting and into the TOP FIVE! Please vote in each category every day through March 4th! Vote here: [loudountimes.com](http://loudountimes.com)

## This Month

**Feb 28 - Mar 4: VOTE EVERY DAY FOR BEST OF LOUDOUN**

**Mon Mar 3**

Read Across American Day!

**Weds Mar 5**

Reading Time with The Cat in the Hat!

Ash Wednesday Pancake Dinner at 5:45pm, Lenten Service to follow

**Sun Mar 8**

**DAYLIGHT SAVINGS TIME!** Clocks move forward one hour at 2am

**Mon Mar 17**

St Patrick's Day!

Wear something **GREEN**

**Mon Mar 31**

LCPS CLOSED, NLC OPEN for a School's Out Drop-In Day! Email Ms JoAnna to sign up [your school-ager](mailto:joanna.rich@tnlcenter.com)



## SCHOOL'S OUT

LCPS IS CLOSED March 31, but the NLC is OPEN for a School's Out Drop-In Day! Email Ms JoAnna to sign up your school-ager.

\$50 for currently enrolled students

\$70 for non-currently enrolled



Registration opened to the public March 1st and weeks are filling up quickly!

To register, go to [tnlcenter.com](http://tnlcenter.com) and click on the registration link on the right of every page. Admin staff review every request and you will receive one email acknowledging receipt of your registration and another confirming your child's spot. If the week is full, please email [ally.fetch@tnlcenter.com](mailto:ally.fetch@tnlcenter.com) to be added to the waitlist.

Spring Break Camp for School-Age is April 14-17!

Cost is \$25/day for those already enrolled, *on top of your regular tuition*. For those not currently enrolled, the cost is \$70/day. Email [joanna.rich@tnlcenter.com](mailto:joanna.rich@tnlcenter.com) to register, or sign up on the sheet available under the Parent Board.

**NOTE: Regular tuition applies regardless of attendance.**

**NOTE: THE NLC IS CLOSED APRIL 18TH FOR GOOD FRIDAY**



Soccer Stars is back!

The nine-week session costs \$195 and runs from March 25 to May 20. There will be a free Demo Day on Tuesday, March 18 starting at 2:30pm. Watch for a link to sign up!

Staff Birthdays

Mar 4: JoAnna

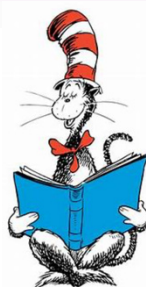
Mar 6: Alyssa

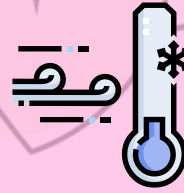
Mar 15: Anne



# March 2025

Sunday	Monday	Tuesday	Wednesday	Thursday	Friday	Saturday
<b>^Sundays at St Andrew - All are welcome!</b> <ul style="list-style-type: none"> <li>9am: Sunday School for youth (MS/HS) &amp; adults</li> <li>10am: Worship service, with Sunday School for younger children during the service</li> <li>9am-noon: Childcare available for infant to age 3</li> <li>The worship service is also streamed on YouTube</li> </ul>				<b>St Andrew Lenten Studies for adults:</b> <ul style="list-style-type: none"> <li>Wednesdays at 9am at Doppio Bunny</li> <li>Sundays at 9am at SAPC</li> </ul>		1
2 Worship^ service 10am MS/HS Youth 6-8pm	3 <b>National Read Across America Day!</b>	4 <b>Mardi Gras</b> Chapel 9:45am	5 Wee Little Arts~ <b>Reading Time with the Cat in the Hat!</b> Ash Wednesday Pancake Supper and Lenten Service 5:45pm	6 National Oreo Cookie Day	7 Mercier School of Dance'	8 International Women's Day
9 <b>DAYLIGHT SAVINGS</b> Worship^ service 10am Minis (grades 4&5) meet during the service	10	11 Chapel 9:45am	12 Wee Little Arts~ <b>Grandpa George Reading Time</b>	13 Good Samaritan Day	14 <b>PI DAY</b> Mercier School of Dance'	15
16 Worship^ service 10am Session mtg after the service MS/HS Youth 6-8pm	17 <b>St Patrick's Day! Wear Something GREEN</b>	18 Chapel 9:45am <b>Soccer Stars* Demo! 2:30pm</b>	19 Wee Little Arts~ <b>Grandpa George Reading Time</b>	20 <b>National Ravioli Day</b> NLC Board Mtg 6:30pm	21 Mercier School of Dance'	22 National West Virginia Day
23 Worship^ service 10am Food on the 4th - bring a food donation	24	25 Chapel 9:45am <b>Soccer Stars*</b>	26 Wee Little Arts~ <b>Grandpa George Reading Time</b>	27	28 Mercier School of Dance'	29
30 Worship^ service 10am	31 <b>LCPS CLOSED NLC OPEN for School's Out Drop-In Day</b>	<b>*Soccer Stars - Demo Day on 3/18 at 2:30pm! Classes on Tuesdays at 2:30pm, 3/25-5/20, 3-5yrs, \$195. Email to register at <a href="mailto:greaterloudoun@soccerstars.com">greaterloudoun@soccerstars.com</a></b> ~Wee Little Arts Session 2: Wednesdays Jan 8 - Mar 5, 2025, pre-K 2:30-3:15pm, 3-yr-olds 3:15-4pm, \$160. Register at <a href="http://weelittlearts.com">http://weelittlearts.com</a> Mercier School of Dance Creative Dance & Ballet: Fridays 9:50-10:20am, 2.5-6yrs. \$68/mo Sep-May, enrollment fee of \$25. Register at: <a href="http://www.mercierschoolofdance.com/registration">www.mercierschoolofdance.com/registration</a> .				



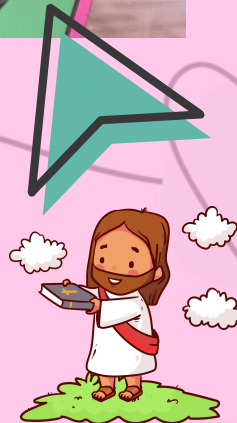


**Cold weather  
outside?  
No problem!**

**That's a good time  
for an indoor  
obstacle course,  
macaroni art,  
building with  
blocks, and sensory  
play!**



**Every Tuesday morning,  
Pastor Amanda leads Chapel with  
the 3s & 4s in the sanctuary.  
For the 2s and toddlers, she comes  
right into their rooms  
for a story and a song!**



# 2025 BEST OF LOUDOUN

Loudoun Times-Mirror

IT'S TIME TO  
VOTE FOR YOUR  
NLC AGAIN!



## ABOUT THE CONTEST

The Loudoun Times-Mirror has been holding its Best of Loudoun contest for over 25 years. It is the biggest contest of its kind in Loudoun County, with hundreds of thousands of votes cast annually. The BOL contest has become local readers' choice recognition for local businesses and organizations because it is conducted transparently and without special favor to advertisers or incumbents. Every nominee is treated exactly the same - and readers are the ones who decide.

## HOW THE CONTEST WORKS

The contest is conducted in three phases:

1. **Nomination Phase:** Readers propose business organizations and names for all of the categories. The NLC has already been nominated for Best Preschool and Best Daycare AGAIN!
2. **First Voting Round:** Think of this like a primary in an election. Readers vote to winnow the big list of nominees down to just the Top Five in each category. **THIS PHASE IS 2/21 TO 3/4!**
3. **Final Voting Round:** Readers vote on the Top Five to determine the winner and two finalists in each category. **THIS PHASE IS APRIL 18-29!**

## You're invited...to a Lenten Bible Study

Lent is a season of spiritual discipline and preparation. We slow down, take time, and examine our internal spiritual lives and the way we live out our Christian faith in the world around us.

***During the 40 days of Lent, you are invited to join a small group within St. Andrew's congregation to gather weekly for up to one hour to share and learn with other disciples of Christ. This six-week commitment between March 5 and April 20 is a powerful opportunity for participants to grow their faith while fellowshiping with and learning alongside others.***

**"everything [in] between: Meeting God in the midst of extremes"**

**A Lenten series in Luke's gospel**

Our theme, "Everything In Between," invites us to navigate the polarities in our lives with more faith, intention, and openness to be transformed. You will see that each weekly sub-theme explores two supposed binaries, like "faith & works" or "rest & growth," or "grief & hope." We often consider these ideas to be opposing. However, as we explore these concepts within the scriptures, we find nuance and complexity. We find that these dichotomies are false. We might begin to see a full spectrum instead of black and white. We might find that God is present in between.

Questions? Contact Pastor Amanda [amanda.kemery@standrew-pres.org](mailto:amanda.kemery@standrew-pres.org)  
or Ally Fetch [ally.fetch@tnlcenter.com](mailto:ally.fetch@tnlcenter.com)

Available Study Times:

- Tuesdays at 7pm @ Monks in Purcellville, led by SAPC member Kevin Burel
- Wednesdays 9am @ Doppio Bunny in Purcellville, led by Pastor Amanda
- Sundays 9 am in Fellowship Hall, led by Ally Fetch



# The Neighborhood Learning Center ~ Menu for March 2025

		Monday	Tuesday	Wednesday	Thursday	Friday
Mar. 3 - 7	Morning Snack	WG Cereal*^ Milk^	Yogurt^ Granola* Water	Turkey Sausage Patty* Biscuit*^ Water	WG Pancakes*^ Berries Water	WG Cereal*^ Milk^
	Lunch	Turkey & Gravy*^ Green Beans WG Roll*^ Peaches Milk	Chicken & Rice*^ Corn Mandarin Oranges Milk	WG Chicken Nuggets*^ Peas Pineapple Milk	Pasta w/ Meatsauce*^ Salad w/dressing^ Mixed Fruit Milk	Chili*^ Cornbread*^ Pears Milk
	Snack	Apple Cinnamon Bar*^ Fruit Cup Water	Pretzels* Hummus* Ranch Dip^ (T) Crackers Water	Cat in the Hat Snack*^ Cheese Sticks^ Goldfish Crackers*^ Water	National Oreo Day! WG Corn Chips* Salsa (T) Crackers Water	Pudding^ Vanilla Wafers*^ Water
Mar. 10 - 14	Morning Snack	WG Cereal*^ Milk^	Muffins*^ Bananas Water	Bagels*^ Cream Cheese^ Water	Chipped Beef Gravy*^ Biscuits*^ Water	WG Cereal*^ Milk^
	Lunch	Salisbury Steak* Mashed Potatoes*^ WG Roll*^ Pineapple Milk	Taco Salad*^ Corn WG Roll* Peaches Milk	Chicken Noodle Soup w/ Carrots*^ Crackers* Applesauce Milk	WG Fish Nuggets*^ Peas Pears Milk	Pizza Day! Salad w/ Dressing^ (T) Cucumbers Mixed Fruit Milk
	Snack	Crackers* Pepperoni* Sliced Cheese^ Water	Fig Newtons* Yogurt^ Water	WG Homemade Trail Mix*^ Water	Veggie Straws* (T) Animal Crackers*^ Raisins* Water	Teddy Grahams*^ Cheese Itz*^ Water
Mar. 17 - 21	Morning Snack	WG Cereal*^ Milk^	Yogurt^ Granola*^ Water	WG Waffles*^ Fruit Milk	Sausage Gravy*^ Biscuits*^ Water	WG Cereal*^ Milk^
	Lunch	Meatball Sub on a WG Roll*^ Green Beans Mixed Fruit Milk	WG Chicken Nuggets*^ Peas Peaches Milk	BBQ Pulled Chicken*^ WG Roll*^ Corn Applesauce Milk	Ravioli Day! Salad w/ Dressing^ (T) Cucumbers Pineapple Milk	Chili* Corn Bread*^ Pears Milk^
	Snack	Rainbow Goldfish Crackers*^ Lime Sherbet^ Water	Pretzels* Ranch Dip^ (T) Crackers* Water	Graham Crackers*^ Bananas Water	Chewy Chocolate Chip Granola Bar*^ Go-gurt^ Water	WG Corn Chips* Salsa (T) Crackers Water
Mar. 24 - 28	Morning Snack	WG Cereal*^ Milk	Muffins*^ Bananas Water	Turkey Sausage Patty* Biscuits*^ Water	WG Pancakes*^ Berries Water	WG Cereal*^ Milk^
	Lunch	Chicken & Rice Casserole w/ Carrots*^ Crackers* Pineapple Milk	Beans & Franks*^ WG Roll*^ Pears Milk	WG Fish Nuggets*^ Peas Mixed Fruit Milk	Chicken & Cheese Quesadillas*^ Corn Peaches Milk	Roast Beef & Noodles*^ Green Beans Applesauce Milk
	Snack	Fig Newtons*^ Yogurt^ Water	Goldfish Crackers*^ Sliced Apples (T) Applesauce Water	Veggie Straws* (T) Animal Crackers Raisins* Water	Bagels*^ Cream Cheese^ Water	Cukes, Carrots, & Dip^ Bean Crackers*^ (T & 2s) Crackers & Sun Butter*^ Water

Whole milk is served to children under 2 and 2% milk is served to all others. Menus are subject to change.

\*May contain eggs ^May contain milk (T)=Toddlers WG = Whole Grain